

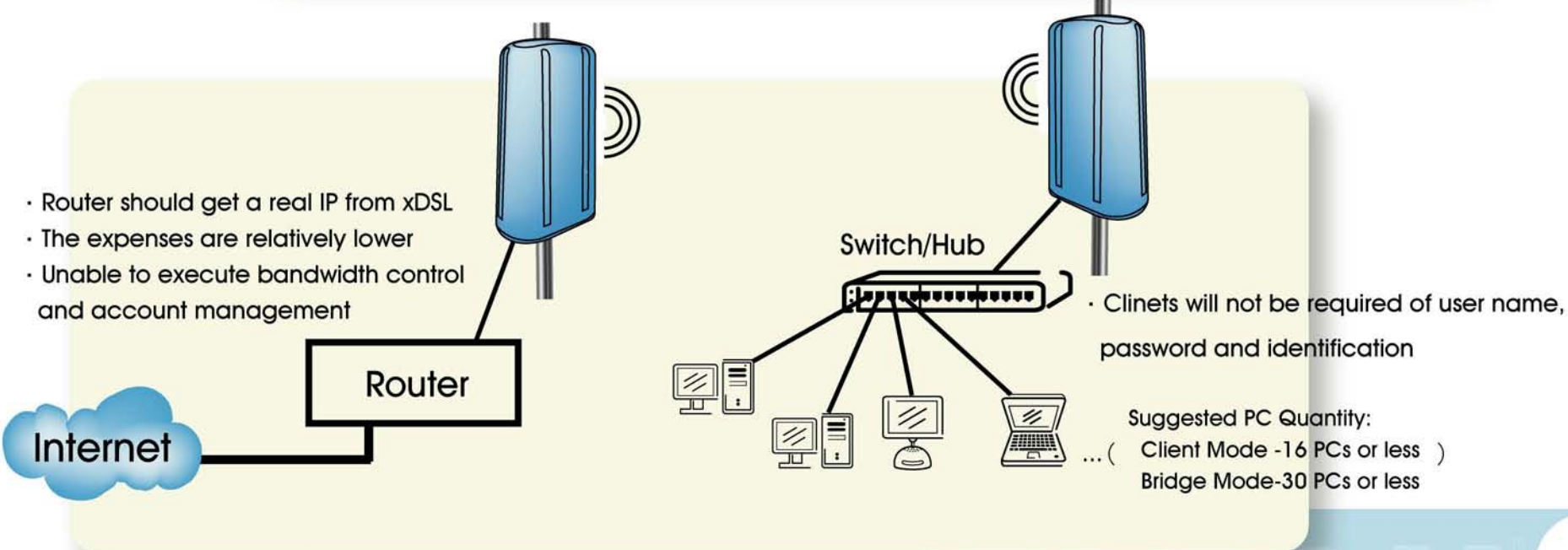
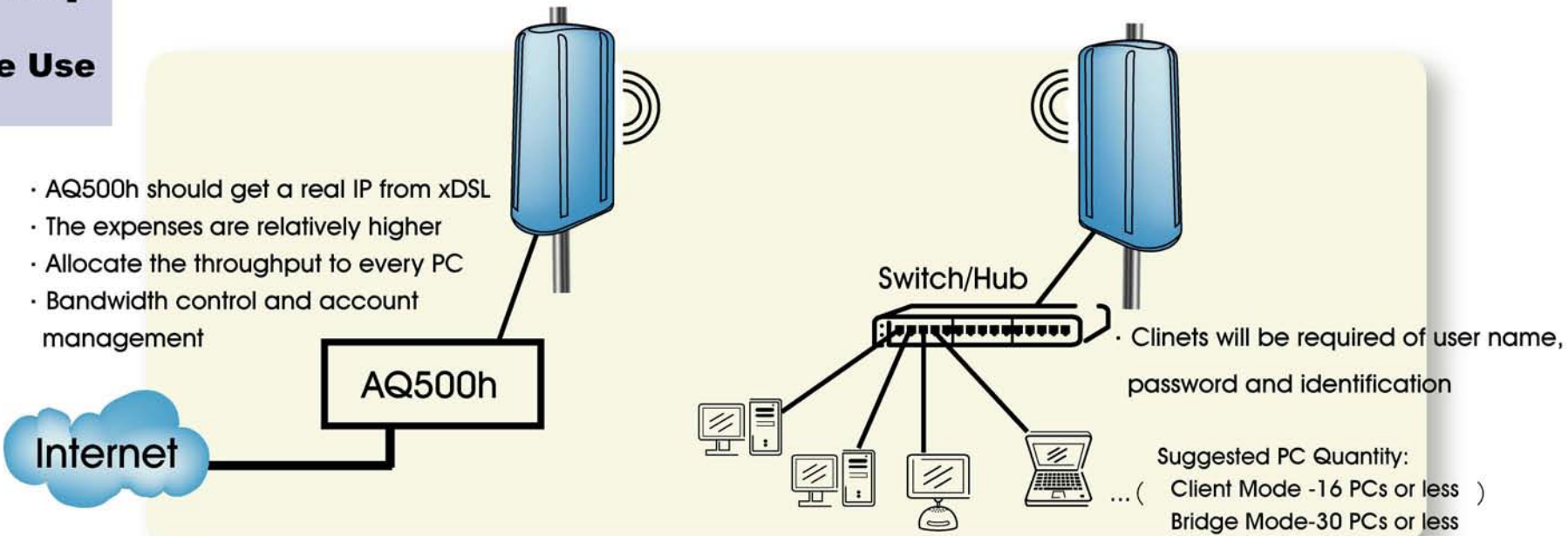
## General Explanation

1. Surf Internet: ISP must make sure they can get enough bandwidth to clients.
2. The suggested PC quantity for every link.

Internet bandwidth	PC quantity	Throughput (data rate)
64K	2PC	32K
512K	16PC	32K
1M	32PC	32K
2M	64PC	32k
4M	128PC	32K
8M	256PC	32K
16M	512PC	32K

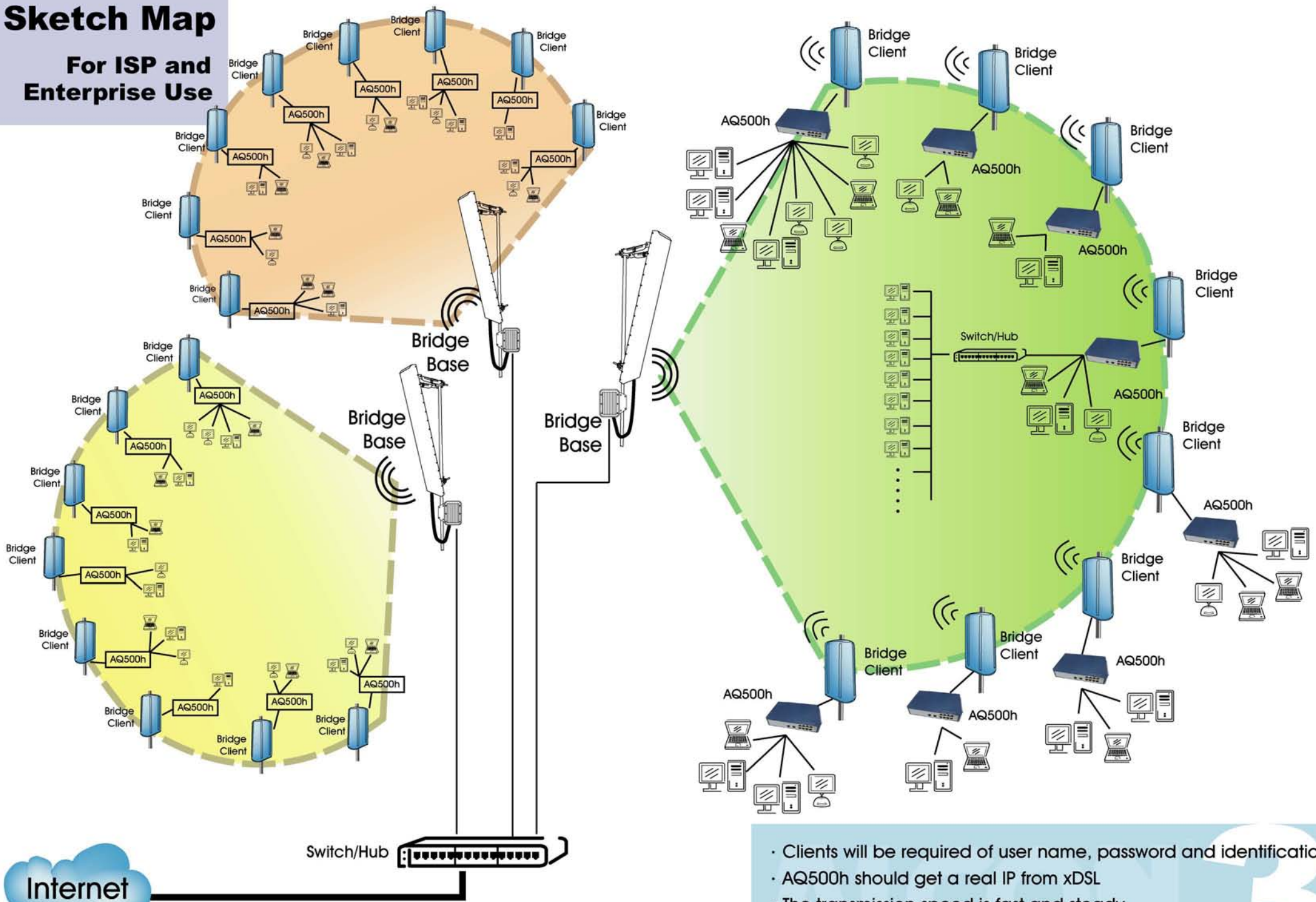
# A Sketch Map

## For Private Use



# A Sketch Map

For ISP and Enterprise Use



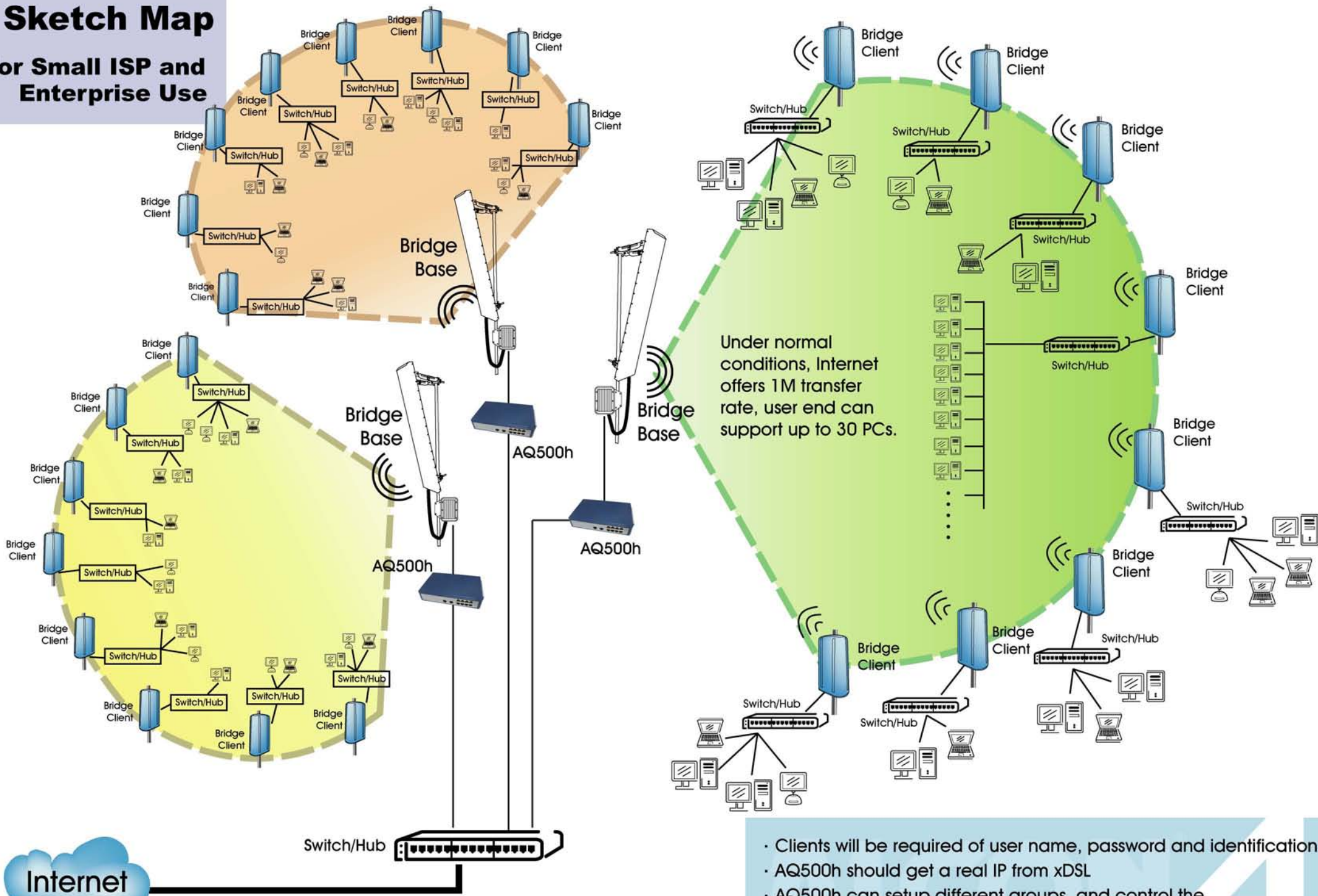
Surf Internet: ISP must make sure they can get enough bandwidth to clients.

- Clients will be required of user name, password and identification
- AQ500h should get a real IP from xDSL
- The transmission speed is fast and steady
- The expenses are relatively higher



# A Sketch Map

## For Small ISP and Enterprise Use



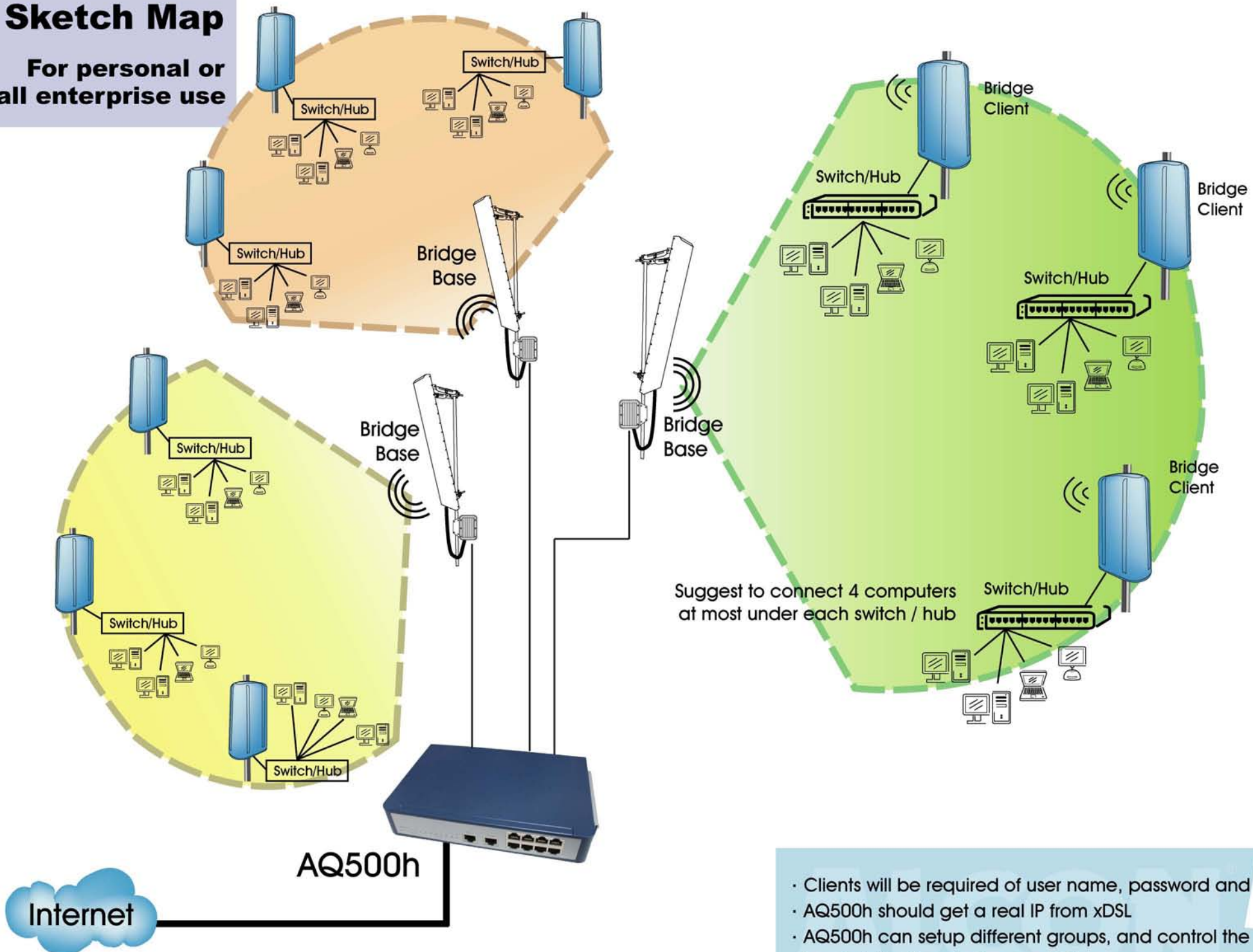
- Clients will be required of user name, password and identification
- AQ500h should get a real IP from xDSL
- AQ500h can setup different groups, and control the bandwidth of each Slave or PC in every group



Surf Internet: ISP must make sure they can get enough bandwidth to clients.

# A Sketch Map

For personal or small enterprise use



AQ500h

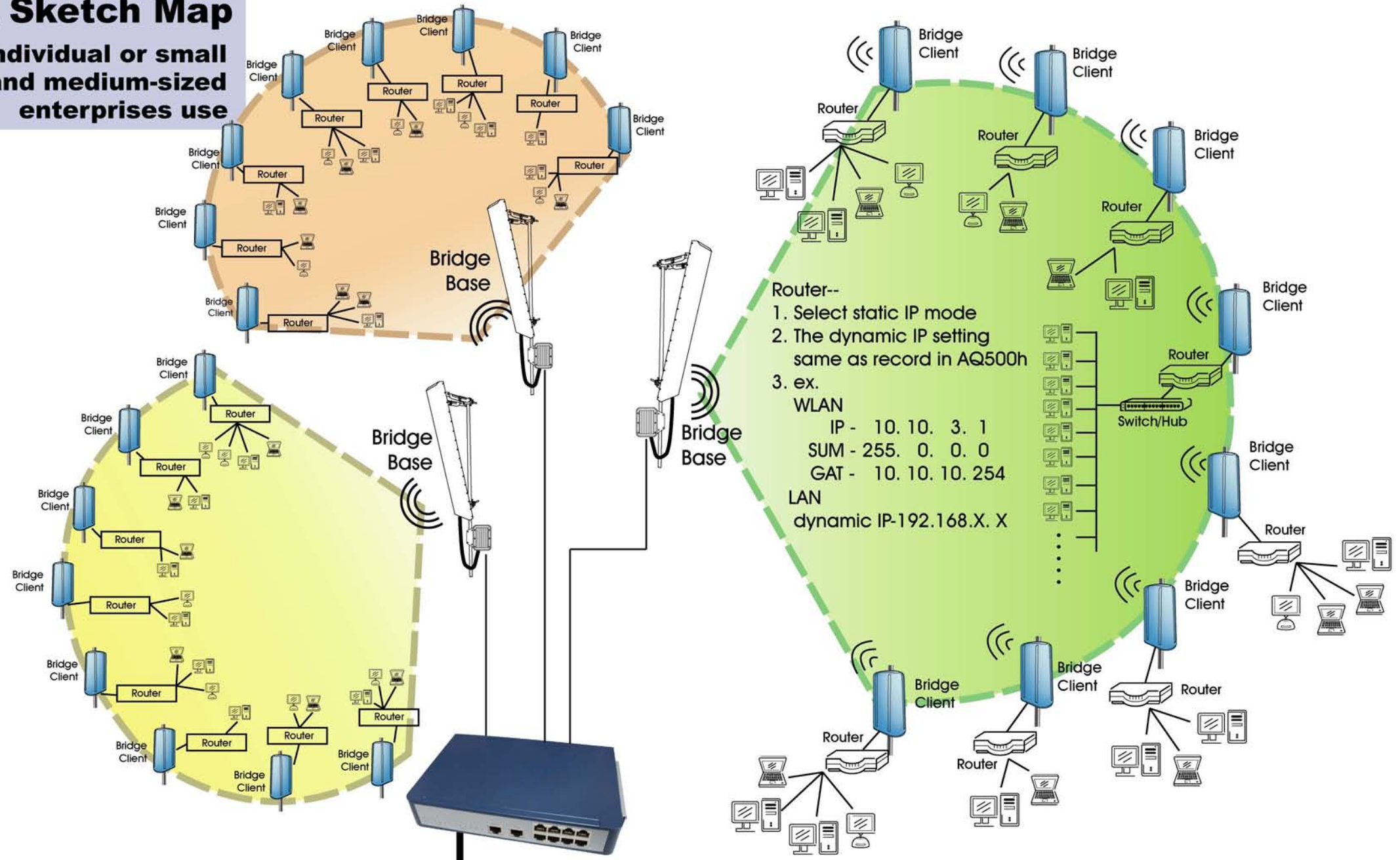
Surf Internet: ISP must make sure they can get enough bandwidth to clients.

- Clients will be required of user name, password and identification
- AQ500h should get a real IP from xDSL
- AQ500h can setup different groups, and control the bandwidth of each Slave or PC in every group



# A Sketch Map

Individual or small and medium-sized enterprises use



- Router--
1. Select static IP mode
  2. The dynamic IP setting same as record in AQ500h
  3. ex.
    - WLAN
      - IP - 10.10.3.1
      - SUM - 255.0.0.0
      - GAT - 10.10.10.254
    - LAN
      - dynamic IP-192.168.X.X

AQ500h

AQ500h allocates dynamic IP (WLAN IP) for each Router and Router should also correspond to; AQ500h must memorize dynamic IP and MAC of each Router.

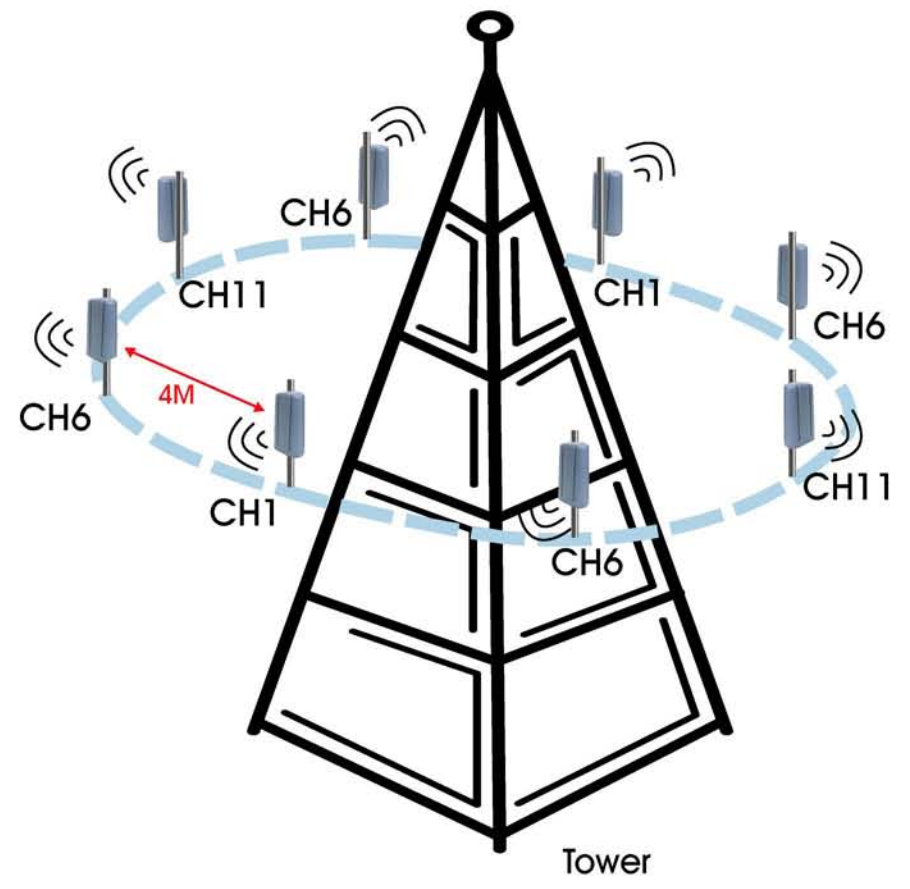
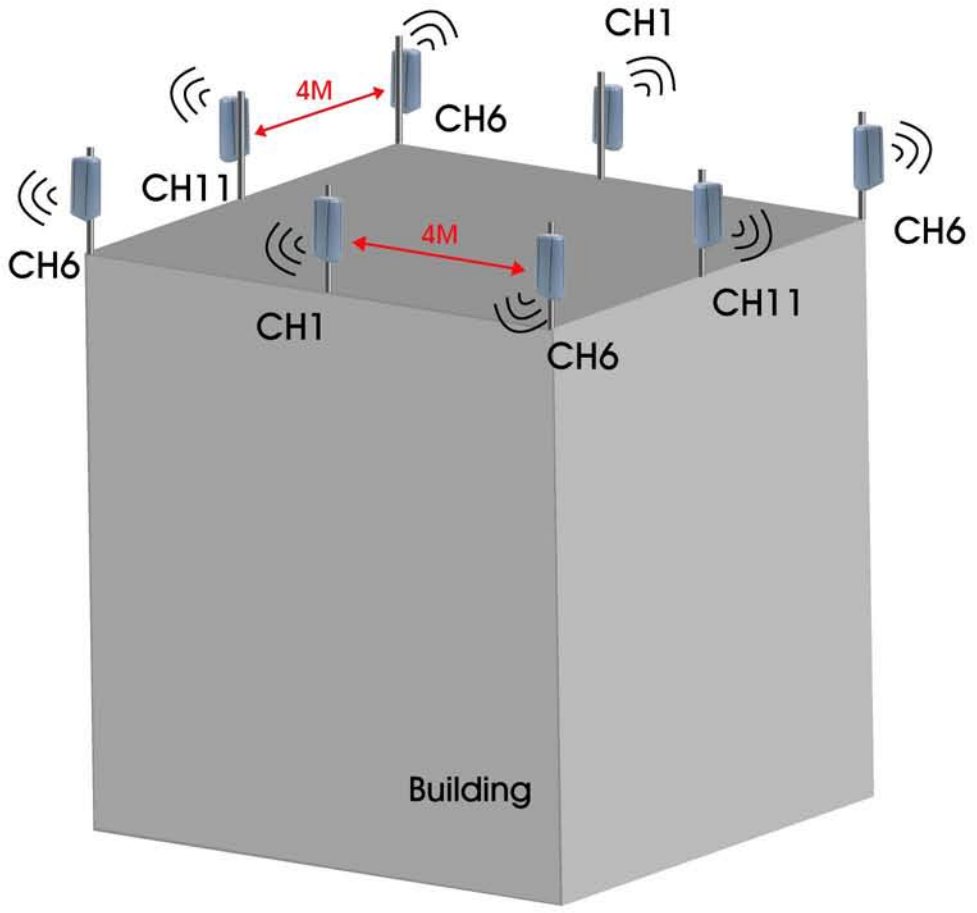
- Clients will not be required of user name, password and identification
- AQ500h should get a real IP from xDSL
- By adding Hubs under Router can extend the quantity of PC
- Control bandwidth by the wireless base platform



Surf Internet: ISP must make sure they can get enough bandwidth to clients.

# A Sketch Map

The channels allocation and establishing



- Recommended channel setting in the same building or tower
- The interval of each antenna is necessary in 4M or more

